

## TECHNICAL DATA SHEET

# Asbestos and Metal Gutters System

Reference	SWT Corrosion Primer	Liquasil One
Purpose/Uses	Surface and wet tolerant for use with Liquasil polymers	Liquid Gutter Lining
Colour	Grey	Standard Grey and RAL Colours Range subject to minimum quantities of 100 litres
Application	Brush or Roller	Apply by Brush - Roller
Volume Solids	100%	100%
Recommended Film Thickness	100 microns	750 microns
Coverage Rate	Up to 6m <sup>2</sup> per litre. Presence of heavy rust or use on cast iron will reduce coverage rate	Approx 1.25 m <sup>2</sup> per litre at wet film weight of 750 microns
Drying Time	Allow 6-24 hours drying time	Rain free - 2 to 3 hours Thoroughly dry- 16 hours
Thinners/Brush wash	Use Sacrificial Brushes	Xylene
Weight per Litre	2.6 kg	1 kg
Flash Point	> 100° C	Above 32° C
V.O.C.	V.O.C. Free	V.O.C. Free
Finish	Matt	Semi Gloss
Application Temperature	5° C to 40° C (Optimum 15° C to 30° C)	-5° C +60° C
Considerations	Keep tins cool and shaded in summer. Keep tins warm in winter.	
Approvals		BS 476: Part3:1958, Fire and BS 6920 Water Quality DIN EN ISO 7783-2
Surface Preparation	Remove existing or factory finishes and prepare to bare metal	All surfaces must be clean and thoroughly dry, particularly at joints


### FOR PROFESSIONAL USE ONLY

#### Liquasil Limited

Unit 6 Bartleet Road, Redditch, Worcestershire, B98 0DQ  
t 0121 709 5352 e info@liquasil.com w www.liquasil.com

www.liquasil.com

February 2019 - Version 4.0 Liquasil Limited - all rights reserved

 LIQUASIL

## Liquid Gutter Lining System

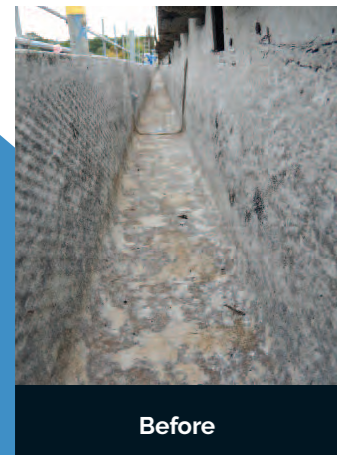
FOR ASBESTOS, METAL AND CONCRETE GUTTERS

www.liquasil.com

## Application Method

### Asbestos Cement or Concrete Gutters

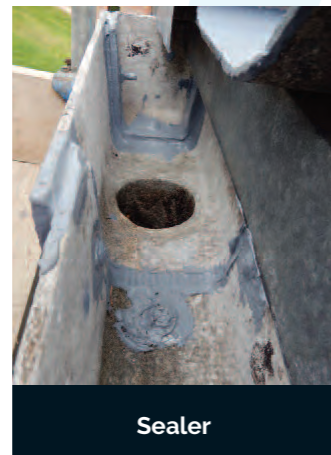
- Thoroughly clean the gutter, removing any existing, unstable finishes and previous prior repairs, raking out old joint sealant as far as reasonably practicable.
- If large holes, cracks or delamination of the asbestos cement substrate are present, please contact Liquasil Ltd for further guidance.
- If old bitumen is present, it should be removed as far as reasonably practicable. Note that bitumen bleed can discolour the product and cause adverse adhesion issues.
- Treat all metal fixings with SWT Primer and allow to dry.
- Before continuing, ensure all surfaces are clean and bone dry. Take care that no moisture is present on the surface or within any joints of the gutter.
- Apply a liberal coat of Non-Sag Sealer to all previously primed fixings and joints and to any small cracks or holes that might be present.
- Using a roller or brush, apply Liquasil One to entire length of gutter, including sealed joints, fixings and repairs to form a seamless gutter lining, at a wet film weight of 750-1000 microns.



Before



Primer



Sealer



Completed Installation



## Application Method

### Metal Gutters

- Thoroughly clean the gutter, removing any existing, unstable finishes and previous patch repairs (especially at joints) as far as reasonably practicable.
- Apply a single coat of Liquasil SWT Primer at a wet film thickness of 120 microns to entire surface to be treated and allow to dry. (SWT Primer can be applied to wet or damp surfaces).
- Before continuing, all surfaces to be coated must be bone dry. Ensure that there is no trapped moisture at the joints of the gutter.
- Apply a liberal coat of Non-Sag Sealer to joints and fixings.
- Using a paint roller or brush, apply a single coat of Liquasil One at a wet film thickness of 750-1000 microns.

For gutters with existing coatings, or single ply membranes, please contact Liquasil Ltd for further guidance.



Before



Primer Applied



Completed Installation

